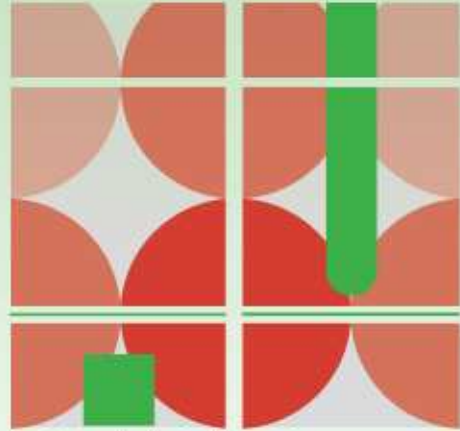


ACNU08



**Brisbane**

**2008 NATIONAL  
CONGRESS OF THE  
AUSTRALIAN COUNCIL  
FOR NEW URBANISM**

6th – 9th February, 2008



# Collaborative Design Processes in Australia and Internationally

With input from preceding NCI Course and EBD Masterclass



Chip Kaufman, Ecologically Sustainable Design  
Melbourne, [esdesign@netspace.net.au](mailto:esdesign@netspace.net.au)

Ecologically Sustainable Design Pty Ltd, Melbourne

# CONTENTS

**Purpose**

**Suite of Processes, Internationally, with  
Australian adaptations, and Case Studies**  
(and with input from preceding NCI Course and EBD Masterclass)

**History**

**Key Success Factors**

**Vulnerabilities**



# Purpose

“For every complex and difficult problem there is an easy solution, and it is wrong.”

...H. L. Mencken

Stakeholders are *defacto* clients, because they're the end users. People as important as the plan.

Conventional 'Public Consultation' is often self-defeating.

A solve-one-problem-at-a-time approach will only paint the the complex inter-dependent whole into a corner.

Interlocking problems usually require interlocking solutions.

Collaboratively test, by means of indicative designing, where, when, how, and therefore whether a proposition and its related Objectives can be achieved, for a specific place.

Enable the Power of Reason to prevail.



# Enquiry by Design

*(this term generally covers the suite of processes)*

*Enquiry by Design is a transparent, multi-day, stakeholder-collaborative, design-based process for resolving complex and controversial urban projects. Because the factors influencing urban development, sustainability and amenity are so inter-dependent, Enquiry by Design deals at the same time with all environmental, economic and social issues, and at all scales ranging from architecture to the sub-region. Before the process, EBD outputs are usually positioned as non-binding, until we have determined whether they work or not, by means of this method.*

**Simultaneously Interactive**  
**instead of**  
**Sequentially Reactive**

*This writing courtesy of ESD*

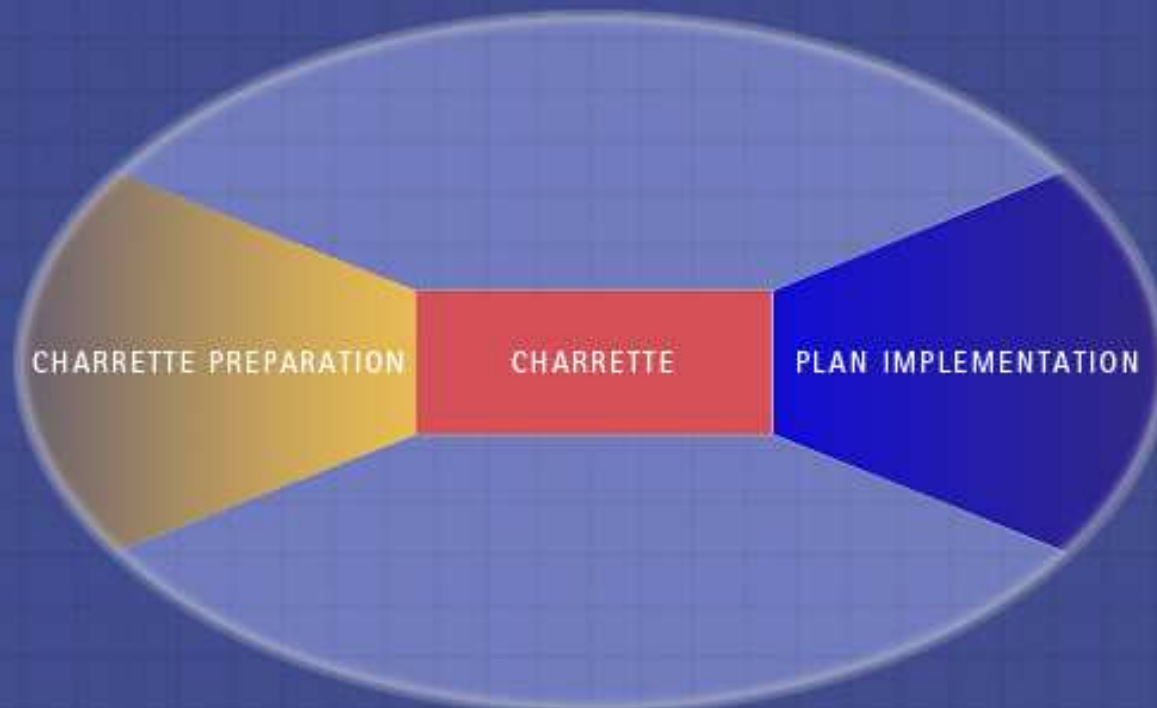
Ecologically Sustainable Design Pty Ltd, Melbourne



Alexis LeMaistre, 1889

# The NCI Dynamic Planning Process

- A three-part process for achieving transformative change in public and private planning efforts
- The overall process in which the charrette is the transformative event



[www.charretteinstitute.org](http://www.charretteinstitute.org)

# Charrette

(5 days usually, other EBD processes equally integrative)

Charrettes for public, when project requires very significant citizen participation,  
included in specific sessions

**Introductory Public Meeting includes Public Consultation, but  
only after an Introductory Presentation clarifying the whole  
project context and opportunities**







**On-site designing and consultation is common across all EBD's**



**Set up the design studio & Project Briefing**

**Study & tour the site, Government Agencies Meeting/s**



# Days 3 - 4 usually Saturday & Sunday (more consultative)



## Community and/or Stakeholder Consultation for Charrettes

Topical and/or area-specific meetings

‘Open Studio’ sessions for the public

Meetings with landowners

## **Day 5** (more design/production)

**In-house Iterative Design Resolution iterative with Measuring of Outcomes, Preparation of Concluding Public Presentation, common to all EBD approaches**



# Concluding Meeting

(time afterwards for review and possible revisions)

When Charrette, it's public. When other EBD's, this meeting may be for invited stakeholders only, depends on consultation needs of the project

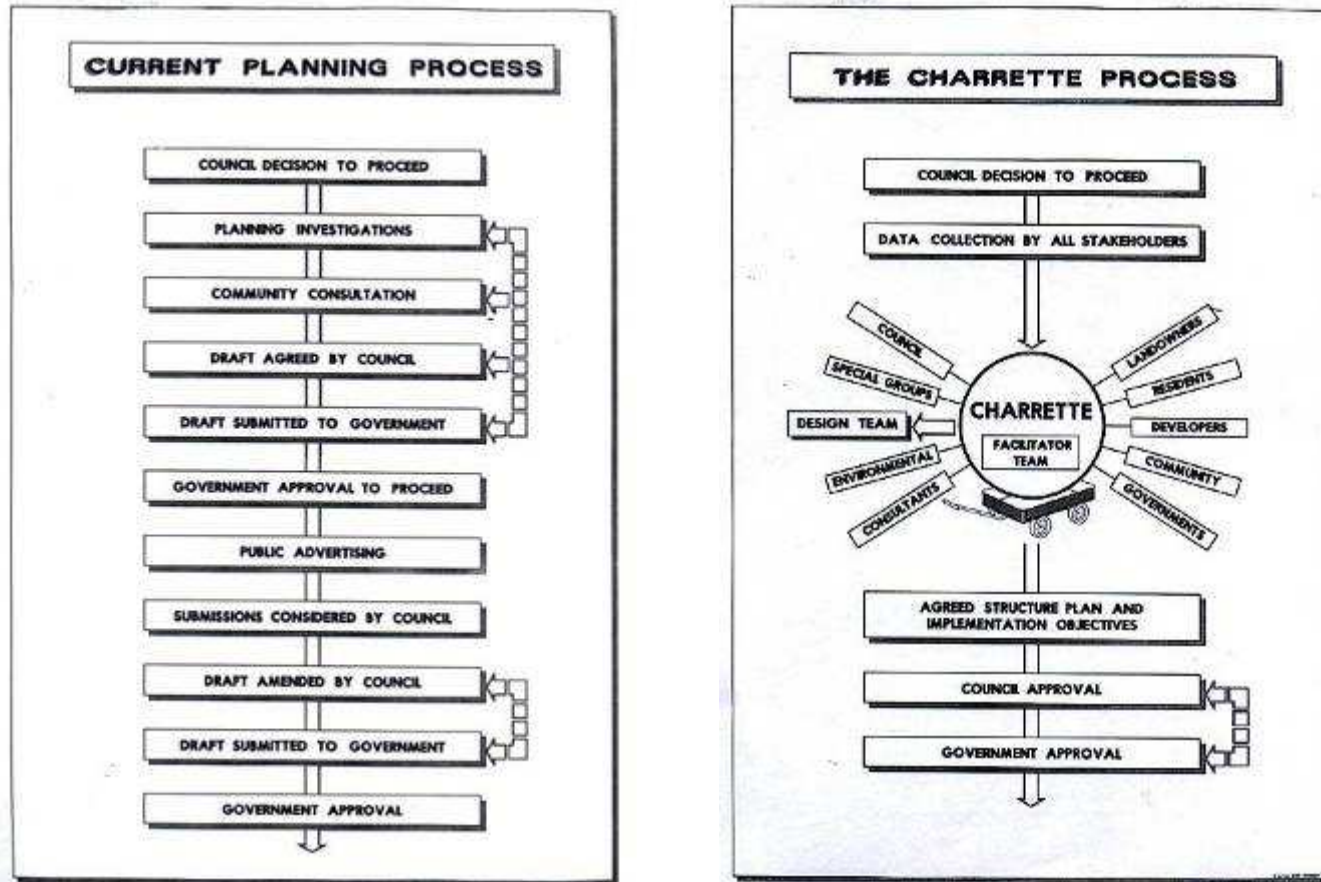


Sufficient detail (at all scales) to enable participants to see, understand, and test proposals, in terms of where, when, how and whether



# ACNU08 Mastersclass and NCI Course

# How EBDs relate to normal approval processes.



Often in Oz, the normal approval process does not support EBD, despite its demonstrated benefits.

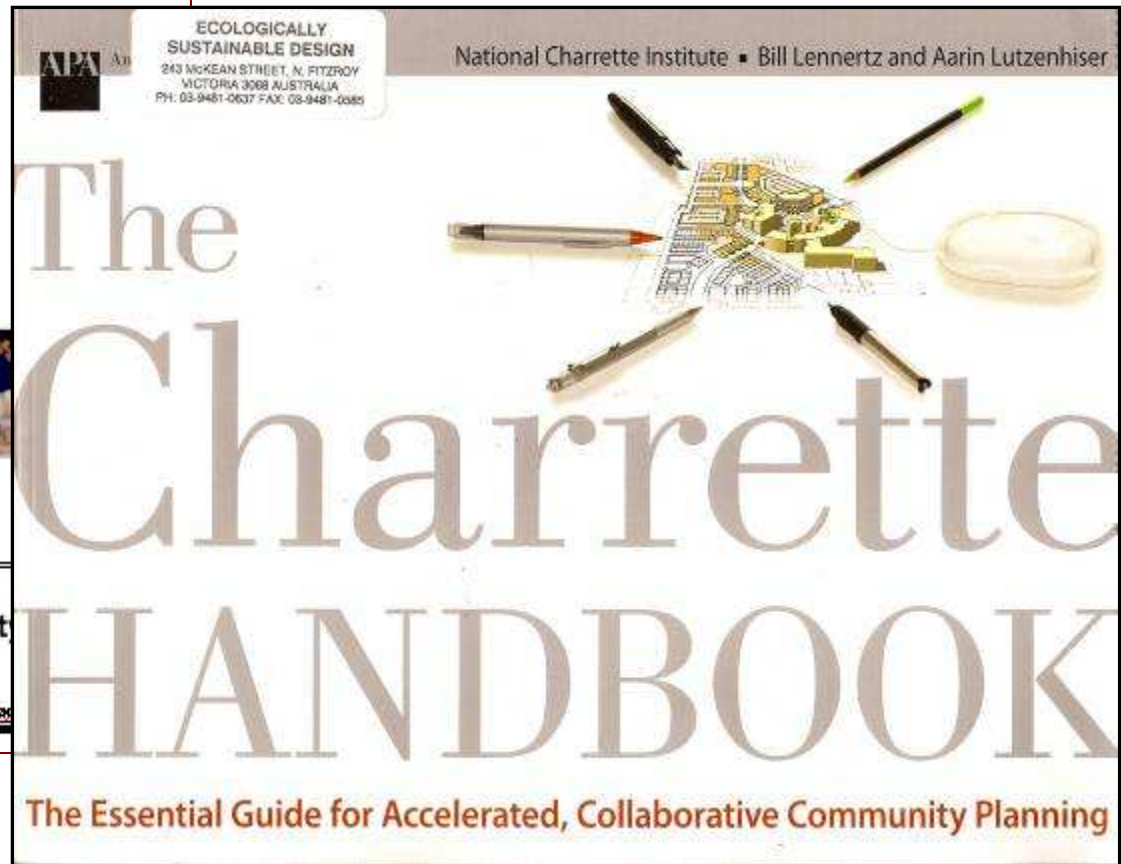
# High Risk, High Return Preparation is Crucial, or Risk Catastrophe

## Client's Preparation Manual For Enquiries by Design and Charrettes

2006 Edition

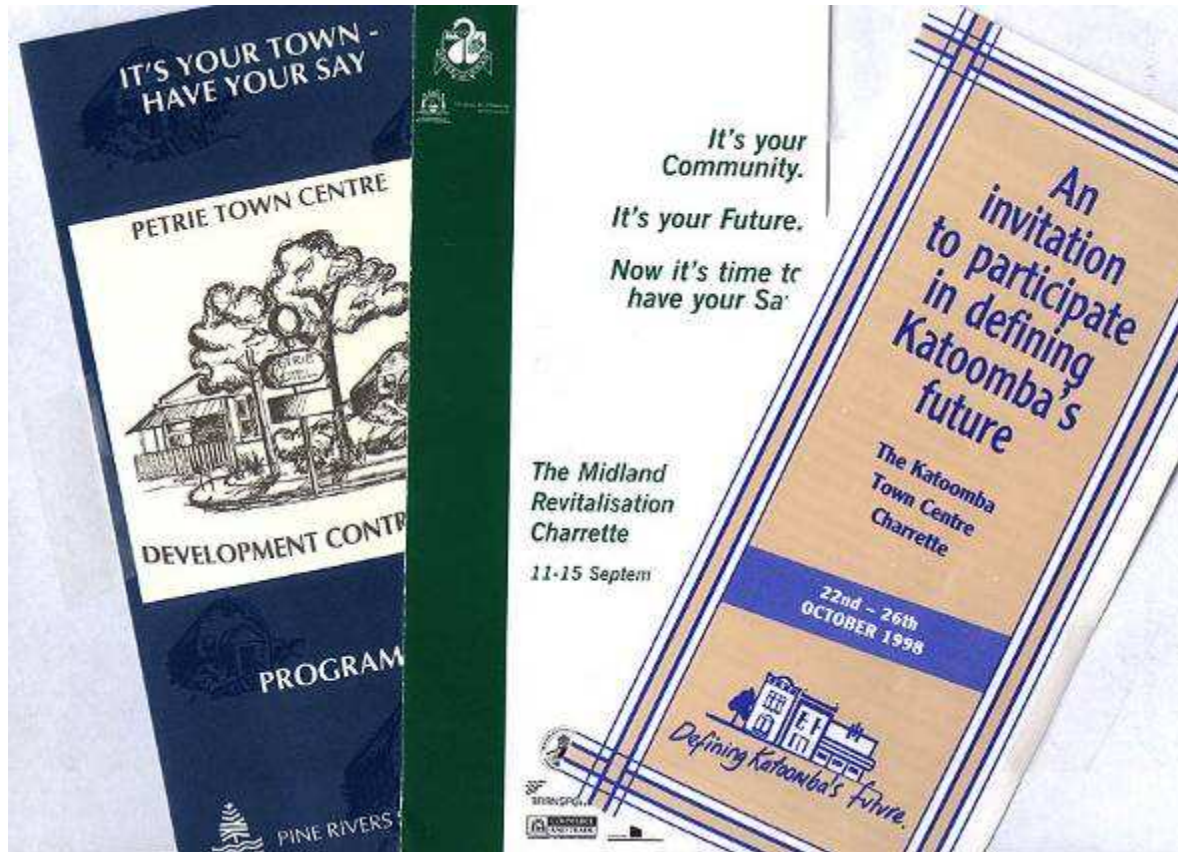


**Ecologically Sustainable Design Pty**  
*(the goal)*  
243 McKean Street  
North Fitzroy, Vic 3068  
tel 61 3-9481-0637, fax 61 3-9481-0585, email [esdesign@netspace.net.au](mailto:esdesign@netspace.net.au)



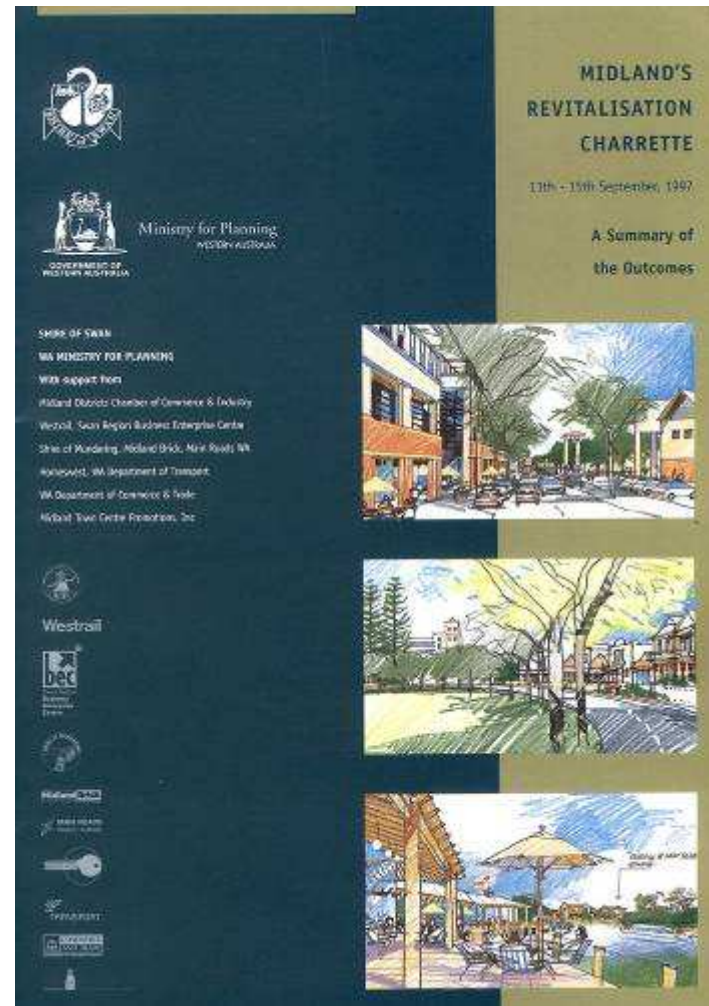
Ecologically Sustainable Design Pty Ltd, Melbourne

# EBD/Charrette announcements only part of the ramping up toward the event





# Charrette/EBD brochures (10-20 pages) instrumental in informing, promoting and sustaining momentum



Post-EBD implementation is crucial, and by no means dependable, yet.

Ecologically Sustainable Design Pty Ltd, Melbourne

# History

First New Urbanist Charrettes, such as for Seaside, Florida (before NU had its name) in early 1980's, in response to need for a holistic collaborative response to the straightjacket of sprawl regulation. Largely pioneered by DPZ.

## Early Efforts

The first new urbanist town to get built from the ground up was **Seaside**, on the Florida coast.

NU Timeline from [www.cnu.org](http://www.cnu.org)

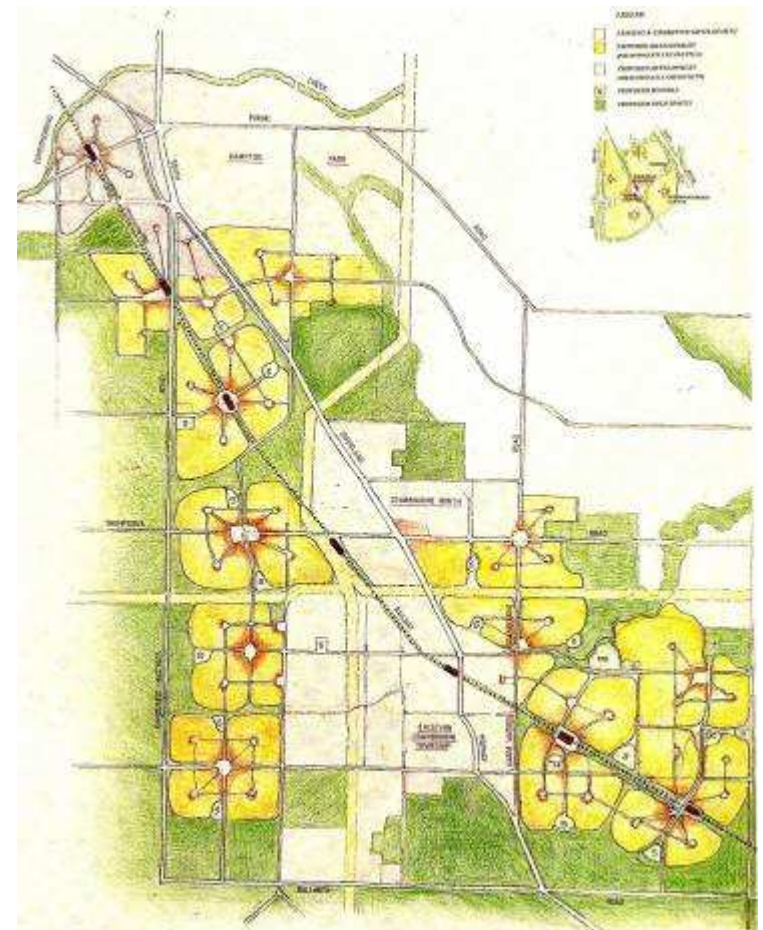
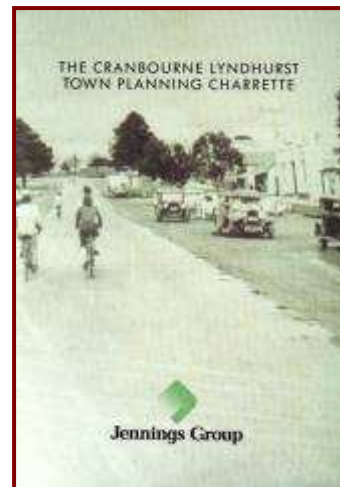
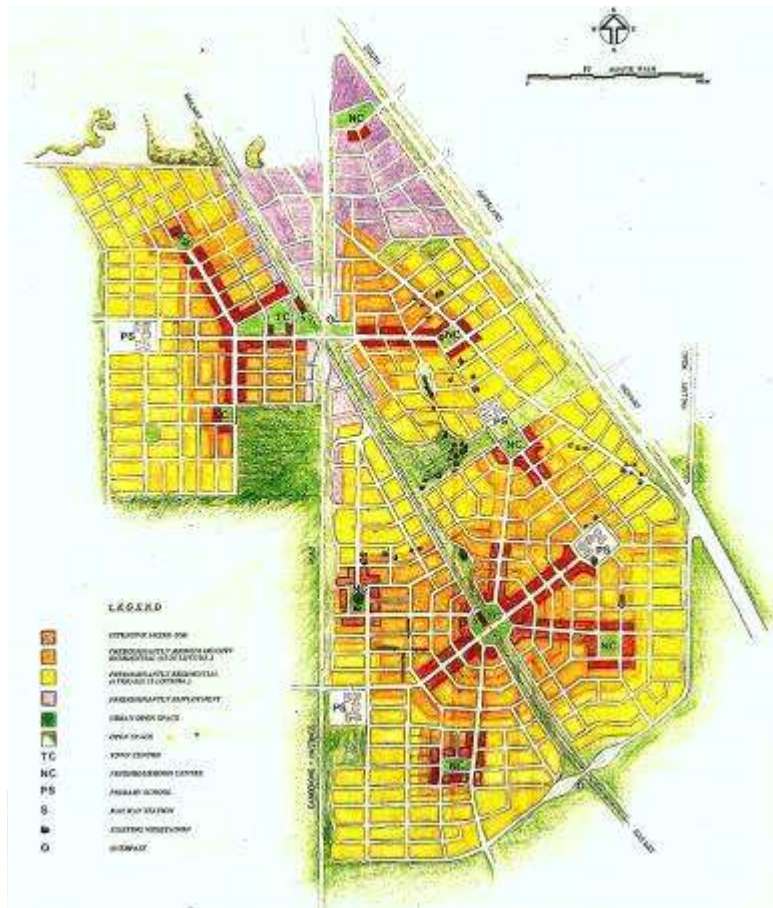


# History

Congress for New Urbanism established in 1992 ([www.cnu.org](http://www.cnu.org)), Charter signed in 1994

Practice expands beyond US by early 1990's, with ESD introducing process to Australia in 1992 and NZ in 1996

## Cranbourne Charrette, Melbourne, 1992



## Beacon Cove Charrette, 1992

Port Melbourne, Victoria, led by Paul Murrain with Wendy Morris at State as 'client' and 'champion' to implement A controversial government-owned infill site that catalysed medium rise development in inner Melbourne. New public waterfront and village node.



Best selling development in Melbourne for 5 years

Ecologically Sustainable Design Pty Ltd, Melbourne

# History

**2003: National Charrette Institute (NCI) established**

**2004: Urban Design Alliance forms in Brisbane, and leads EBDs**

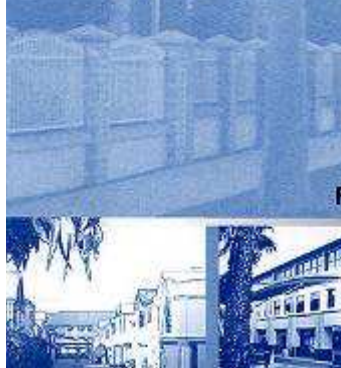
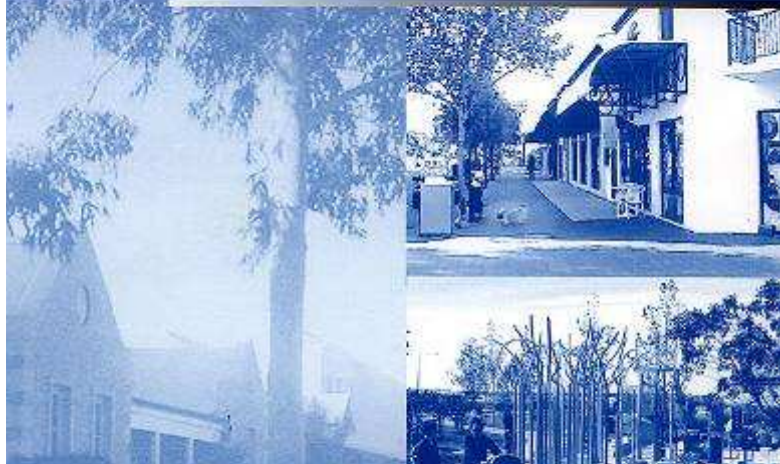
**2005: Andres Duany leads eleven simultaneous Mississippi Renewal Charrettes in response to Hurricane Katrina**

**Now NU and EBDs are becoming basis (at least in part) for informing growth management and healthier communities across many countries, and hopefully for Climate Crisis**

**Processes have co-evolved in North America and Australia, with differing adaptations**

**Contentious Coomera Charrette on Gold Coast Railway, 1995**





**Jindalee Design Workshop, 1996**

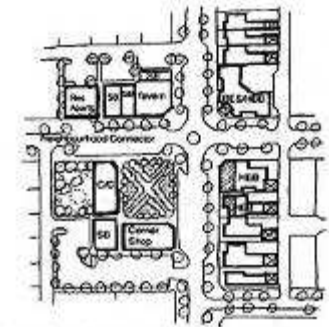
# Liveable Neighbourhoods Code

State-wide Code, WA [www.wapc.wa.gov.au](http://www.wapc.wa.gov.au)

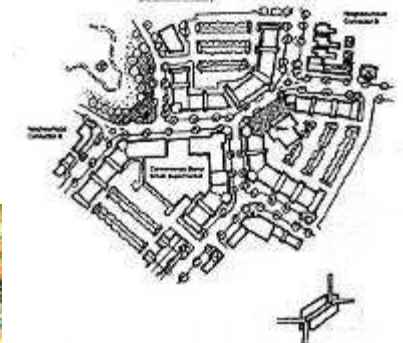
CNU 2001 Charter Award winner

## Code Design Elements

- E1. Community Design
- E2. Movement Network
- E3. Lot Layout
- E4. Public Parkland
- E5. Urban Water Management
- E6. Utilities
- E7. Activity Centres & Employment
- E8. Schools



8.1 Centre focused around a small park or plaza



8.2 Centre on a street segment where two streets come together as one, to focus sufficient traffic movement and activity (adapted from Tullerbah Village, NSW)

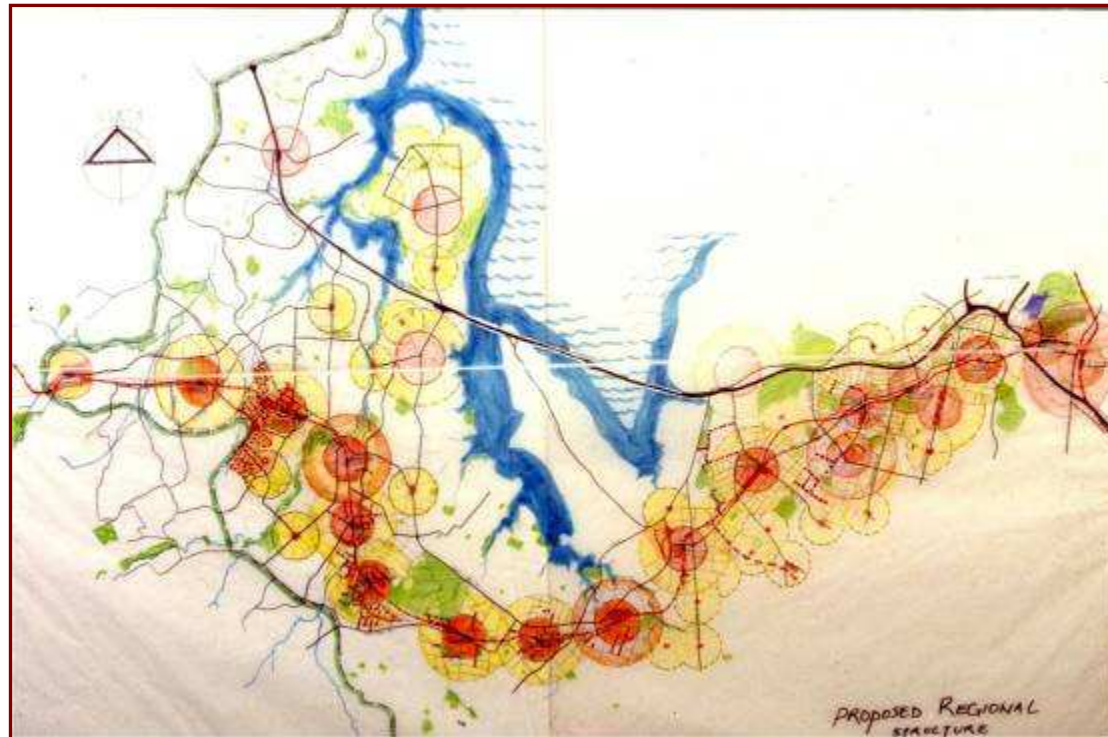


8.3 Centre suited to framing views, such as the ocean (adapted from Jindalee preliminary concept)

Figure 8: Typical larger neighbourhood centre layouts



# Sustainable Design Training Workshops



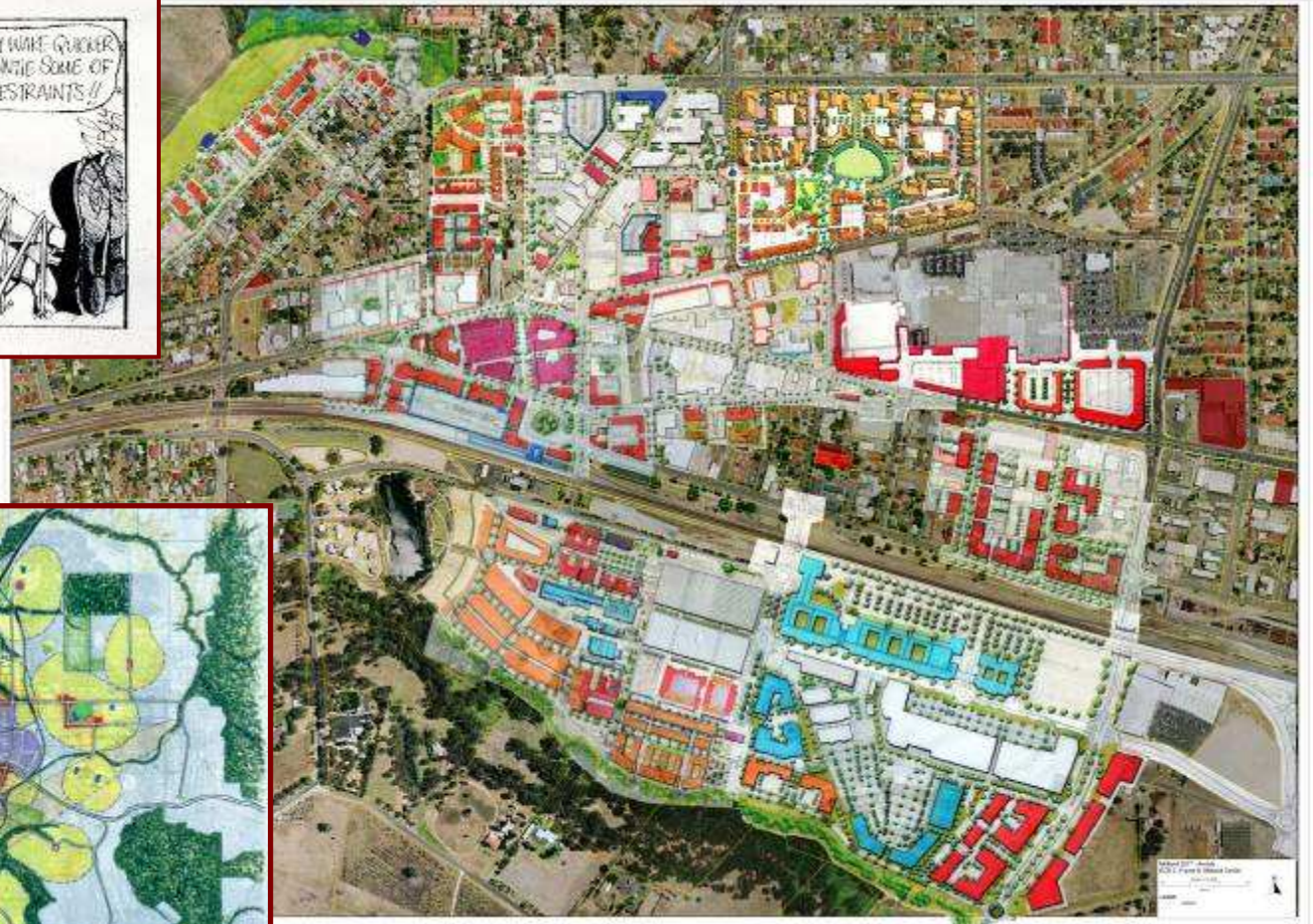
**Waitakere WSDTW, in preparation for New Lynn Charrette  
with joint ESD/Council Team, NZ's first in 1996**

**Newcastle-Lake Macquarie SDTW, 1996**

**Bill Grant, CEO Newcastle (now Chair ULDA), Jason Waziak, Trevor Allen, et al**



# Midland Revitalisation Charrette, 1997 • Enquiry by Design, 2007



2007 City Centre Plan

1997 Charrette Citywide Plan

1999: ESD advances Enquiry by Design for UK, with success of Northampton EBD (now partly built as Upton) resulting in imprimatur of both Government and the Prince



EBD Plan for Northampton Urban Extension

# Sustainable Urban Extensions:

## Planned through Design

### *An executive summary*

*Sustainable Urban Extensions: Planned through Design describes a type of participatory planning exercise new to the UK known as Enquiry By Design. The work described in the report points to the significant contribution Enquiry By Design can make to towns and cities – extensions that deliver a much higher environmental, social and economic performance than has been the case.*

*'We are encouraging house builders, planners, architects – indeed all those involved in the design of residential environments – to work more closely and creatively to achieve a step change in quality. This work from The Prince's Foundation and English Partnerships, with support from the CPRE and my own Department, underlines the importance of developing innovative ways to involve local people in planning decisions, and above all in thinking creatively. This is the key to better planning and the design of sustainable developments.'*

*Nick Rayburne MP, Minister for Housing and Planning.*



Ecologically Sustainable Design Pty Ltd, Melbourne

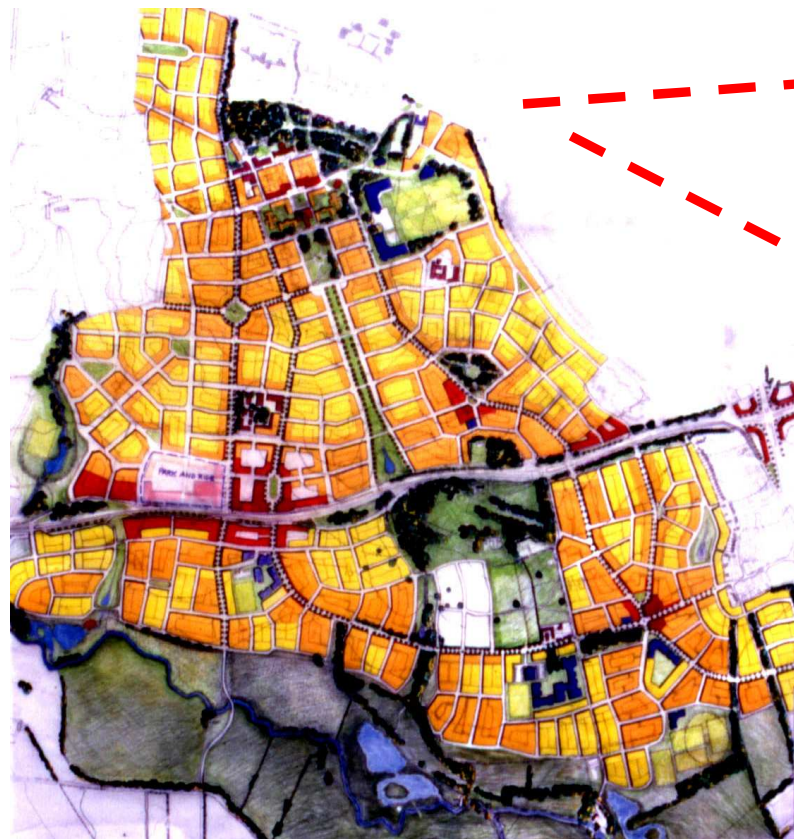
**2008 UK Royal Town Planning  
Institute's National Sustainable  
Communities Award**



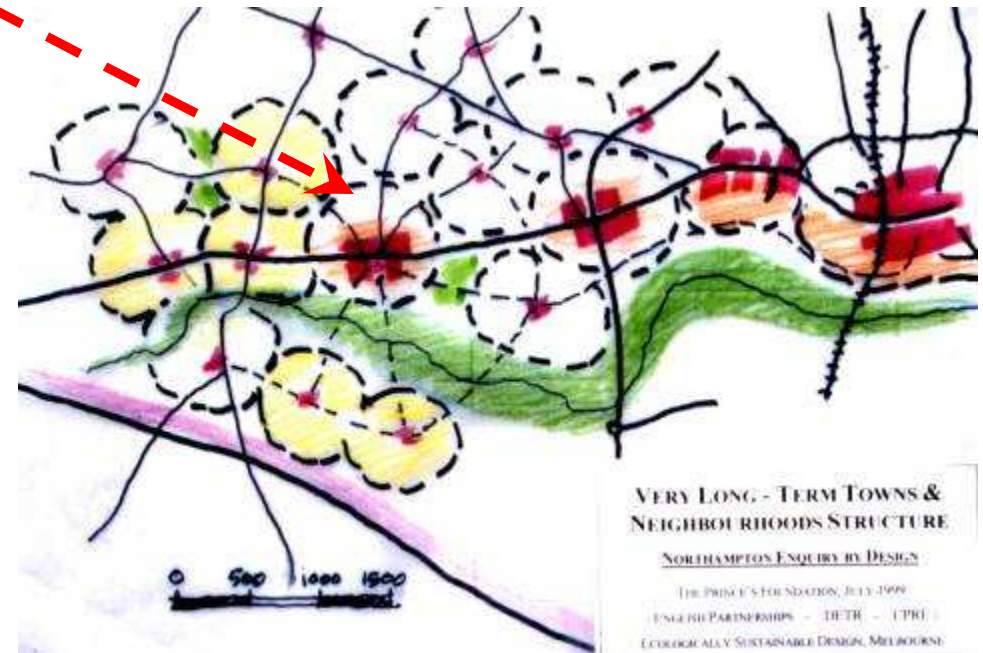
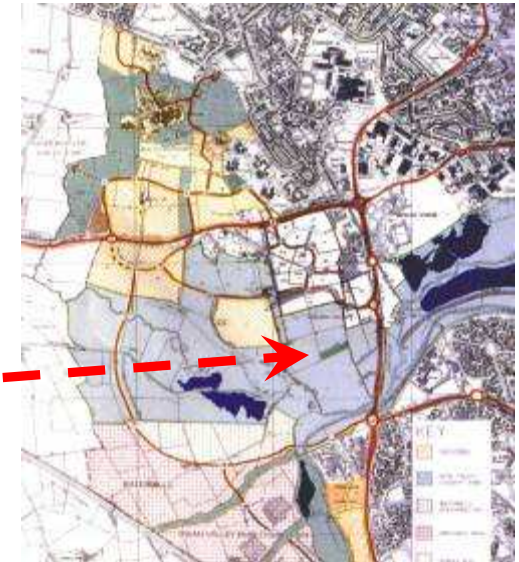
**Upton, UK, born of an  
EBD, and a recognised  
sustainability exemplar**



Is this UK 'pedagogical' and non-binding approach a model for enabling NU/EBDs more widely? Is this a means of fusing and further enlivening the NCI Course and Mastersclass?



EBD Plan for Northampton Urban Extension



# Urban Land Release, 2004

## Western Sydney, NSW



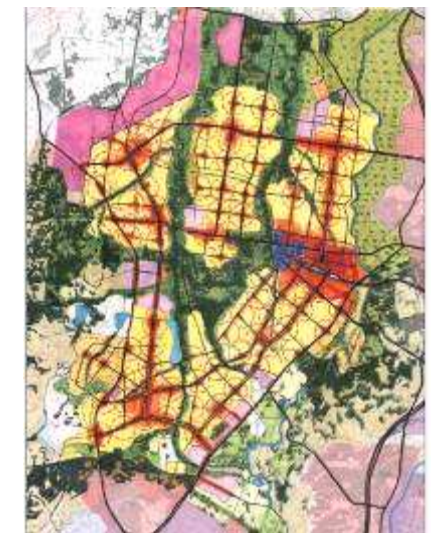
**CNU 2005 Charter Award winner**

State Government-led large-scale sustainable regional planning initiative for two new major city regions.

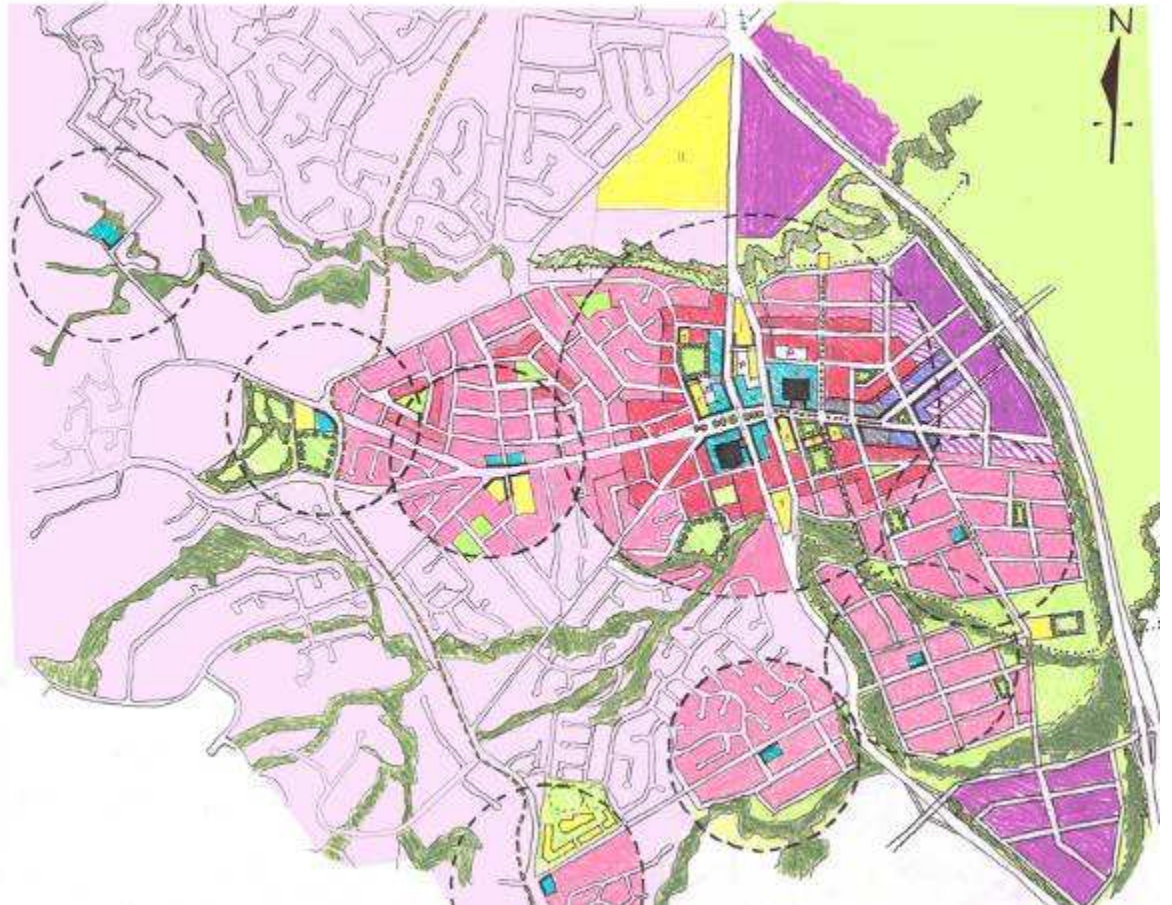
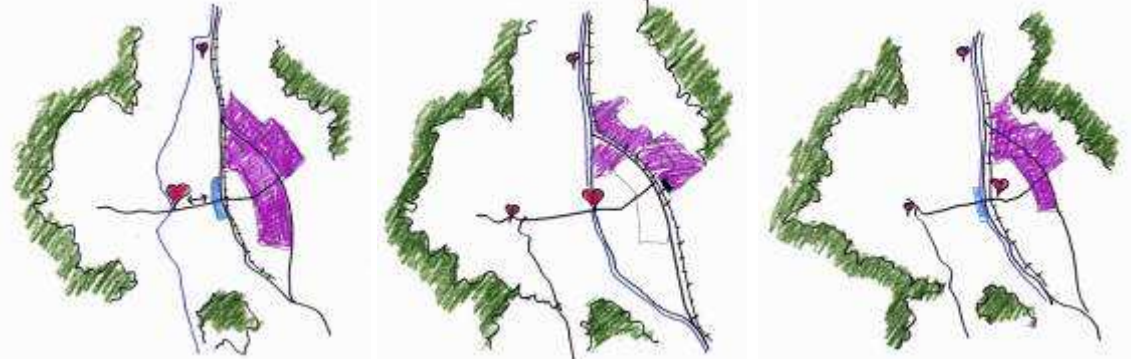
Born of 2 week-long EBDs led by Evan Jones as NSW Director of Sydney Strategy, each involving about 80 stakeholders, who collaboratively designed for 2 of the five days with consultant design facilitators

Growth Centres Commission established; innovative infrastructure funding mechanisms set up; mixed use transit-supportive development must be delivered.

Update coming from Stephanie Barker during ACNU08



# Edmonton EBD, Cairnes, sponsored by QT, 2007



# Ambergate Bussleton WA Design Workshop, 2007

Annand Alcock Urban Design, Lead Consultant



Ecologically Sustainable Design Pty Ltd, Melbourne

# Australian Process Adaptations

(not necessarily Australia-wide, but at least done by ESD)

Scoping Workshops, to inform project approaches

Enquiries by Design (not Charrettes), when for key stakeholders but not public, during which stakeholders also design in facilitated teams (Western Sydney Urban Land Release)

Joint Client/Consultant Teams, to better engage and 'skill up' client staff/implementers, to reduce consultant costs, and to augment implementation

Sustainable Design Training Workshops for Government and others who want to internalise these skills (Waitakere SDTW produces many of Auckland's leading NU designers/leaders)





# Key EBD Success Factors (not there yet)

1. Inherent legitimacy
2. EBD Objectives
3. Transparency
4. Required outcomes specified
5. Sufficient preparation
6. Sufficient existing conditions information/drawings/aerials
7. Client commitment to support the outcomes (if worthy) over the long haul, and/or a local 'Champion'
8. Right team with technical, consultation and collaboration skills, and no conflicts of interest

# EBD Vulnerabilities

**Risk of preparation insufficiencies, including engaging stakeholders to participate**

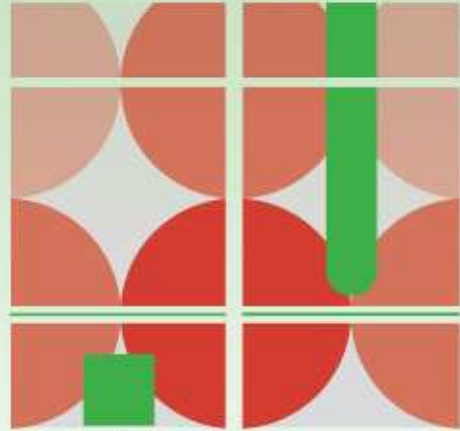
**Implementation Challenges, when Charrette leaders are remote**

**Risks of lost continuity in project implementation**

**Perceived Conflicts of Interest, when developer funded**

# Should we be enabling NU and EBDs, Systemically?

ACNU08



**Brisbane**

**2008 NATIONAL  
CONGRESS OF THE  
AUSTRALIAN COUNCIL  
FOR NEW URBANISM**

6th – 9th February, 2008

